

Appendix | 8

Basic principles of accounting policies

GENERAL PROVISIONS

Accounting policies as a set of principles, rules of the organization and technology of implementation of the methods for conducting accounting are developed for the purpose of formation of the most complete, objective and authentic reporting, and also financial and management information, taking into account organizational and branch features of Lenenergo.

Ways of maintaining accounting and tax accounts are applied by Lenenergo consistently, all new elements and aspects are included in the Accounting policies as modification in the operating policies, approved in past years. At formation of the present amendments of the Accounting policies all amendments have been consistently applied since 1 January 2014.

Lenenergo organizes, conducts accounting and prepares accounting reporting according pursuant to the Federal law # 402-FZ of 6 December 2011 "About accounting", relevant regulations on accounting (RAS), the Working Book of accounts developed on the basis of standard book of accounts of accounting of financial and business activity and the Instruction on its application, approved by Order of the Ministry of Finance of the Russian Federation # 94n of 31.10.2000 in the last operating edition.

Lenenergo applies the Working Book of accounts of accounting including synthetic and analytical accounts which is developed on the basis of standard book of accounts.

The Working Book of accounts of accounting allows implementing the scheme of registration and group of data on the facts of economic activity for formation of necessary forms of the reporting (financial, statistical, tax) and is intended for unification of accounting of Lenenergo.

Lenenergo calculates and pays taxes centrally, according to the legislation of the Russian Federation on taxes and fees, the legislation of subjects of the Russian Federation on taxes and fees, regulatory legal acts of local governments on taxes and fees, taking into account the software used for maintaining the account in Lenenergo.

The branches of Lenenergo make the intermediate reporting in the order established by accounting policies, bear responsibility for the account organization on the allocated property, and are guided by basic provisions of the Accounting policies of Lenenergo.

ORGANIZATIONAL ASPECTS OF THE ACCOUNTING POLICIES

The structure of Lenenergo as at 31.12.2013 includes the Executive office and 9 branches. Allocation of branches is carried out in connection with location of production, commercial and business processes.

Heads of branches are appointed by the Director General of Lenenergo and act under power of attorney.

The Chief Accountant of Lenenergo is held responsible for accounting policies formation, maintaining accounting and tax accounts, timely submission of full and authentic accounting and tax reporting, and financial statements under the International Financial Reporting Standards (IFRS). Chief Accountant ensures the formation of revenues and expenditures, capital preservation and performance of the Company's liabilities.

Requirements of the Chief Accountant for documentary registration of business operations and submission of necessary documents and data in accounting services are obligatory for all employees of the Executive office and branches of Lenenergo.

The Chief Accountant is subordinated to the Director General.

ACCOUNT ORGANIZATION

Department of accounting and tax accounting and reporting of the Executive office is directly subordinated to the Chief Accountant, and Divisions of accounting and tax accounting and reporting of branches are operatively and methodologically subordinated to the Chief Accountant.

Divisions of accounting and tax accounting and reporting of branches headed by chief accountants, together with Department of accounting and tax accounting and reporting of the Executive office comprise the accounting service of Lenenergo which basic functions are maintaining accounting and tax accounts, and formation of accounting and tax reporting.

The structure and subordination, separation of powers and responsibilities, structure, distribution of accounting functions (including their centralization), and formation of the list of objects of the account within the Company's accounting service is carried out at direct coordination with the Company's Chief Accountant depending on production functions of branches and business processes occurring in them.

Maintaining accounting under IFRS standards and preparation of international financial statements are carried out by the Division of preparation of IFRS statements of the Executive office, which is a part of Department of accounting and tax accounting and reporting.

Division of tax accounting and reporting of the executive office carries out control of tax payments, formation of taxable base and tax declarations, and consolidation of registers (forms) of tax accounting.

Division of tax accounting and reporting of the Executive office carries out control of tax payments, formation of taxable base and tax declarations, and consolidation of registers (forms) of tax accounting.

TECHNICAL ASPECTS OF THE ACCOUNTING POLICIES

Documents that register business transactions with cash (over bank accounts, by cash documents, under contracts changing financial liabilities of Lenenergo) are signed by the Director General of Lenenergo and the Chief Accountant or by authorized persons.

The right to sign primary registration documents is established by the Lenenergo Order. Besides, heads of divisions (chiefs of managements, departments, services etc.) have the right of the signature of documents according to their official and functional duties under the power of attorney issued by the Director General of the Company.

The procedure for using digital signature, in order to ensure confidentiality, is approved by the individual administrative documents of Lenenergo, depending on the directions of use.

When using the electronic signature in bank calculations, formation of primary accounting documents is required.

When using electronic document for the basis of accounting, it is obligatory to have a paper copy of the primary accounting document for any accounting entries made.

For registration of financial and economic activities, needs of tax accounting and RAS 18/02 requirements on which standard forms of primary registration documents are not provided, forms of tax registers and documents on the basis of RAS, methodical instructions and instructions on accounting and operating forms of primary registration documentation, taking into account requirements of the power supply system and the separate branch features accepted and reflected in accounting policies are developed in Lenenergo.

Primary documents used by Lenenergo in registration of standard economic operations of the Company are developed taking into account specifics of activity and by the accepted ways of maintaining accounting are given in Application 2 to the present Regulation.

Due to use in the Company of the automated system of the account it is possible to maintain primary accounting documents and other used forms of periodic reporting in electronic form, with listing according to requirements of auditor and tax authorities.

Movement of primary documents in Lenenergo (creation or receiving from other enterprises, establishments or the organizations, movement between branches, acceptance to the account, processing, written off and transfer to archive) is regulated by the schedule of documents flow, which is in Application 3 to the present Regulation on Accounting policies.

Copies of the documents confirming an expense of financial funds, forming for calculations with the various organizations according to Lenenergo liabilities (including branches), are transferred in Treasury of the Executive office with the filled form "Payment order" and the put-down stamp "accepted to the account" and the signature of the responsible person of that accounting service which is registered in the given flow rate.

Copies of contracts, originals of acts and invoices according to liabilities are transferred in that accounting service which is authorized on maintaining this expense.

Accounting and tax accounting of property (including, fixed assets), liabilities and business transactions is conducted in rubles and kopeks. The accounting reporting is made in thousand rubles.

Property (materials, fixed assets, etc.) are transferred from branch to branch according to the indication of the management as redistribution of property of the uniform legal entity on the corresponding accounts of intra-economic calculations of the Working Book of accounts.

Objects, taxation on which is made proceeding from a place of their location (real estate, vehicles etc.) are considered in tax accounting in the context of territorial accessory.

The accounting reporting of Lenenergo is formed by Accounting Department of the Executive office on the basis of consolidated information on objects of the Company's accounting as an economic entity:

- » facts of economic life;
- » assets;
- » liabilities;

- » activity financing sources;
- » income;
- » expenditures;
- » other objects, in the case where it is established by federal standards.

Preparation of reporting on taxes and fees in relation to taxes and fees paid centrally is carried out by Department of tax accounting and reporting of the Executive office on the basis of data provided by departments of accounting and tax accounting and reporting of branches, other services of Lenenergo.

Disclosure (allocation in separate article) of reporting indicator is carried out provided that its size is essential.

The indicator is considered essential if failure to disclose it may influence business decisions of stakeholders made on the basis of reporting information. The level of severity is set at a rate of 5 % to a grand total of the appropriate section of accounting forms.

An error in accounting and reporting pursuant to item 3 RAS 22/2010 is admitted essential if it alone or in aggregate with other errors for the same reporting period distorts an indicator of the reporting article for more than 10 %.

Lenenergo represents annual reports according to the addresses and in terms stipulated by the current legislation, and publishes annual reports no later than 1 June of the year following the reporting period.

Inventory of assets and liabilities for accounting and tax accounts is carried out pursuant to Methodical instructions on inventory of assets and financial liabilities approved by Order # 49 of the Ministry of Finance of the Russian Federation of 13.06.1995.

Carrying out inventory is obligatory:

- » before drawing up of the annual accounting reporting (except for the property which inventory was carried out not earlier than 1 November of fiscal year);
- » of fixed assets and intangible assets — once a year as of 1 November;
- » of inventory items — once a year as of 1 November;
- » of assets and liabilities accounted on off-balance accounts — once a year as of 1 November;

- » of financial liabilities — once a year as of 1 January;
- » of cash accounts — monthly as of the last working day of month;
- » at transfer of assets in rent, repayment, sale;
- » at change of materially responsible persons;
- » at identification of plunder, abuse or damage to property;
- » in case of natural disaster, fire or other emergency situations caused by extreme conditions;
- » in other cases set forth by the legislation of the Russian Federation.

Besides inventories provided with a view of drawing up of accounting reporting, Lenenergo carries out inventories necessary for confirmation of the data of operative accounting and for other managerial purposes of the Company.

The schedule of inventories is approved by the Director General of Lenenergo or by heads of branches authorized by him on the branches entrusted to them.

Inventory commissions which structure is approved by heads of branches, and in the provided cases — by the Director General of Lenenergo are established to carry out inventories. At large volume of work working inventory commissions are established to carry out simultaneous inventories.

The differences revealed at inventory level between the actual existence of property and data of accounting are reflected in the accounts of accounting report, within the reporting period of which the inventory results were summed up belongs.

Appendix | 9

List of related party transactions in 2014

#	Contractor	Subject	Amount of transaction, RUB	Minutes of the Board of Directors	Related party
1	JSC IDGC of the North-West	<ul style="list-style-type: none"> » organization of interaction of the parties with government supervisory authorities and departmental controlling organizations on the principle of "one window"; » association and increase of efficiency of processes of purchasing activity, logistics and logistics support of the parties; » formation and maintenance of a unified emergency supply of materials for the elimination of consequences of natural disasters and technological failures in the work of power network facilities of the parties; » optimization of use of personnel resources of the parties. 	-	# 32 of 25.04.2014	JSC Rosseti
2	LLC the Center for Work with Clients and connection and JSC Energy Service Company Lenenergo	Acceptance of JSC Energy Service Company Lenenergo in full rights and duties of the agent on the agency contract # 11-14438 of 12.12.2011.	175,000	# 34 of 30.04.2014	A.V. Sorochinskiy
3	LLC the Center for Work with Clients and connection and JSC Energy Service Company Lenenergo	Acceptance of JSC Energy Service Company Lenenergo in full rights and duties of the agent on the agency contract # 12-11871 of 01.12.2012.	45,167.50	# 34 of 30.04.2014	A.V. Sorochinskiy
4	JSC Energy Service Company Lenenergo	Complex of legal and other actions for the correspondence of consumer services through contact center, to address informing consumers of services.	97,014,931.55 (with VAT 18 %)	# 34 of 30.04.2014	A.V. Sorochinskiy
5	JSC Energy Service Company Lenenergo	Lease of ten (10) parking spaces for placement of vehicles.	44,000 (with VAT 18 %) / month	# 34 of 30.04.2014	A.V. Sorochinskiy
6	IDGC of Volga	Provision of services for organizing and conducting activities on the educational and training ground of JSC IDGC of Volga branch - Penzaenergo in Penza from 4 August 2014 to 10 August 2014.	2,400,000 (with VAT 18 %)	# 39 of 16.06.2014	JSC Rosseti
7	JSC Rosseti	Acquisition of additional ordinary shares of JSC Lenenergo, placed through the open subscription.	173,831,802.96	# 2 of 09.07.2014	JSC Rosseti , A.V. Sorochinskiy
8	JSC Energy Service Company Lenenergo	Lease of non-residential premises of 7-th floor of the building located at: St. Petersburg, Sinopskaya Emb. 60-62, lit. A.	1,196,342 (with VAT 18 %)/month	#4 of 13.08.2014	A.V. Sorochinskiy
9	JSC FGC UES	Lease of premise in the area of 592.3 sq.m	331,567,02 pyб. (with VAT 18 %)/ quarter	# 4 of 13.08.2014	JSC Rosseti
10	JSC IDGC of the North-West	Non-disclosure of confidential information concerning the specified information of special measures of protection.	-	# 4 of 13.08.2014	JSC Rosseti
11	CJSC TSEC	Movable property lease.	3,374,123 (with VAT 18 %)/month	# 4 of 13.08.2014	A.V. Sorochinskiy
12	CJSC TSEC	Movable property lease.	917,356 (with VAT 18 %)/month	# 4 of 13.08.2014	A.V. Sorochinskiy
13	JSC Energy Service Company Lenenergo	Movable property lease for the organization of office space and completion of workplaces.	165,915,23 (with VAT 18 %)/month	# 4 of 13.08.2014	A.V. Sorochinskiy

#	Contractor	Subject	Amount of transaction, RUB	Minutes of the Board of Directors	Related party
14	JSC FGC UES	Provision of services for maintenance services of power supply networks	no more than 3,034,586.73 (with VAT 18 %)	# 5 of 22.08.2014	JSC Rosseti
15	JSC Kubanenergo	Work on technical and operative service and repair of facilities of JSC Kubanenergo	-	# 6 of 09.09.2014	JSC Rosseti
16	JSC Energy Service Company Lenenergo	Implementation of a full complex of design, construction-assemblage works (with supply of materials and the equipment) and commissioning works on creation/modernization of ASUE on border of differentiation of networks of JSC Lenenergo and subjects of the electric power markets at the level of voltage 0,4-0,2 kV the Leningrad region.	no more than 553,623,700 (with VAT 18 %)	# 8 of 06.10.2014	A.V. Sorochinskiy
17	JSC Energy Service Company Lenenergo	Implementation of a full complex of design, construction-assemblage works (with supply of materials and the equipment) and commissioning works on creation/modernization of ASUE on border of differentiation of networks of JSC Lenenergo and subjects of the electric power markets at the level of voltage 0,4-0,2 kV the Leningrad region.	no more than 409,973,800 (with VAT 18 %)	# 8 of 06.10.2014	A.V. Sorochinskiy
18	JSC Energy Service Company Lenenergo	The organization and implementation of work for carrying out inspections of power installations of consumers.	no more than 93,460,500 (without VAT); 28 % (with VAT) of the amount of collected funds	# 8 of 06.10.2014	A.V. Sorochinskiy
19	JSC NIC UES	Establishment of Public Joint Stock Company Federal Test Center.	-	# 11 of 06.11.2014	JSC Rosseti
20	JSC Management of FOCN-OPL	Provision of services to find and attract potential users of electric power facilities; delivery to users of power facilities specifications.	in accordance with the contract	# 12 of 24.11.2014	JSC Rosseti
21	JSC Rosseti	Provision of services in the organization of functioning and development of power network complex.	8,380,923.33 (without VAT 18 %)/month	# 12 of 24.11.2014	JSC Rosseti , A.V. Sorochinskiy
22	JSC IDGC of the North-West	Organization and carrying out of procurement procedures in order to conclude the contracts by customer following the results of purchasing procedures. JSC Lenenergo – Provider.	400,000 (with VAT 18 %)	# 13 of 04.12.2014	JSC Rosseti
23	JSC IDGC of the North-West	Organization and carrying out of procurement procedures in order to conclude the contracts by customer following the results of purchasing procedures. JSC Lenenergo – Customer.	400,000 (with VAT 18 %)	# 13 of 04.12.2014	JSC Rosseti
24	JSC Energy Service Company Lenenergo	Lease of non-residential premises of 7-th floor of the building located at: St. Petersburg, Sinopskaya Emb. 60-62, lit. A.	1,196,342 (with VAT)/month	# 13 of 04.12.2014	A.V. Sorochinskiy
25	JSC Kurortenergo	Movable property lease.	4,226,765 (with VAT 18 %)/month	# 15 of 09.12.2014	A.V. Sorochinskiy
26	JSC Kurortenergo	Movable property lease.	1,889,607 (with VAT 18 %)/month	# 15 of 09.12.2014	A.V. Sorochinskiy
27	JSC Rosseti	Control of implementation of the program of renovation of cable network 6-110 kV in the city of St. Petersburg in 2011-2013.	-	# 18 of 12.01.2015	JSC Rosseti, A.V. Sorochinskiy

Appendix | 10

Data on approved electricity transmission tariffs for 2014–2015

Electricity transmission tariffs approved for 2014 over St. Petersburg:

1. Single (joint-operations) double-rate and single-rate tariffs with differentiation on voltage levels and allocation of tariffs for the group "population" (Order # 600-r of 25.12.2013, as amended by Order #97-r of 27.06.2014):

FROM 01.01.2014 TO 30.06.2014

#	Voltage level	Rate for maintenance of electrical networks, RUB/MW per month	Rate for payment of electric power losses in networks, RUB/MWh	Single-rate tariff, RUB/MWh
	Other consumers			
	HV (110 kV and above)	189,206.52	76.39	588.90
	MV1 (35 kV)	360,175.98	141.52	1,367.64
	MV2 (20-1 kV)	427,657.62	258.11	1,946.64
	LV (0.4 kV)	474,132.49	438.38	2,149.32
	Population			773.29
	Population and other eligible categories of consumers, except as described in item 2.2			1,154.66
	Population and other eligible categories of consumers living in urban settlements in houses equipped in accordance with established procedure with stationary electric ovens and (or) electrical heating installations.			300.98

FROM 01.07.2014 TO 31.12.2014

#	Voltage level	Rate for maintenance of electrical networks, RUB/MW per month	Rate for payment of electric power losses in networks, RUB/MWh	Single-rate tariff, RUB/MWh
11.	Other consumers			
	HV (110 kV and above)	189,206.52	76.39	588.90
	MV1 (35 kV)	360,175.98	141.52	1,367.64
	MV2 (20-1 kV)	427,657.62	258.11	1,946.64
	LV (0.4 kV)	474,132.49	438.38	2,149.32
22.	Population			804.51
22.1.	Population and other eligible categories of consumers, except as described in item 2.2			1,296.34
22.2.	Population and other eligible categories of consumers living in urban settlements in houses equipped in accordance with established procedure with stationary electric ovens and (or) electrical heating installations			244.30

2. Individual double-rate tariffs applied to calculations of JSC Lenenergo with third-party grid organizations (for rendering of services in electric power transmission on their networks) without any differentiation on voltage levels (Order # 601-r of 25.12.2013, as amended by Order # 196-r of 22.08.2014);

3. For CJSC KirovTEK an individual double-rate tariff by a principle "cost minus" (pays to JSC Lenenergo of services in electric power transmission) (Order # 601-r of 25.12.2013, as amended by Order # 196-r of 22.08.2014)

» Over the Leningrad Region:

1. Single (joint-operations) double-rate tariffs with differentiation on voltage levels and allocation of tariffs for the group "population" (Order # 249-p of 30.12.2013, as amended by Order # 90-p of 30.06.2014):

FROM 01.01.2014 TO 30.06.2014

#	Voltage level	Rate for maintenance of electrical networks, RUB/MW per month	Rate for payment of electric power losses in networks, RUB/MWh	Single-rate tariff, RUB/MWh
11.	Other consumers			
	HV (110 kV and above)	947,076.71	106.26	1,014.48
	MV1 (35 kV)	1,136,250.68	154.47	1,598.72
	MV2 (20-1 kV)	889,954.80	332.98	1,645.80
	LV (0.4 kV)	1,320,531.75	752.38	3,070.73
22.	Population			967.41
22.1.	Population and other eligible categories of consumers, except as described in item 2.2			1,099.55
22.2.	Population and other eligible categories of consumers living in urban settlements in houses equipped in accordance with established procedure with stationary electric ovens and (or) electrical heating installations			769.69

FROM 01.01.2014 TO 30.06.2014

Third-party grid organization	Rate for maintenance of electrical networks, RUB/MW per month	Rate for payment of technological consumption (losses) in networks, RUB/MWh	Single-rate tariff, RUB/MWh
CJSC KirovTEK	228,179.27	223.30	726.53

FROM 01.07.2014 TO 31.12.2014

Third-party grid organization	Rate for maintenance of electrical networks, RUB/MW per month	Rate for payment of technological consumption (losses) in networks, RUB/MWh	Single-rate tariff, RUB/MWh
CJSC KirovTEK	228,179.27	223.30	726.53

FROM 01.07.2014 TO 30.12.2014

#	Voltage level	Rate for maintenance of electrical networks, RUB/MW per month	Rate for payment of electric power losses in networks, RUB/MWh	Single-rate tariff, RUB/MWh
11.	Other consumers			
	HV (110 kV and above)	947,076.57	106.26	1,014.48
	MV1 (35 kV)	1,136,250.00	154.47	1,598.72
	MV2 (20-1 kV)	889,953.23	332.98	1,645.80
	LV (0.4 kV)	1,318,306.27	752.38	3,070.73
22.	Population			967.73
22.1.	Population and other eligible categories of consumers, except as described in item 2.2			1,099.55
22.2.	Population and other eligible categories of consumers living in urban settlements in houses equipped in accordance with established procedure with stationary electric ovens and (or) electrical heating installations			769.69

2. Individual double-rate tariffs applied to calculations of JSC Lenenergo with third-party grid organizations (for rendering of services in electric power transmission on their networks) without any differentiation on voltage levels.

Appendix | 11

Data on approved technological connection tariffs for 2014–2015

ST. PETERSBURG

Connection category	Voltage level in the connection point, kV	Unit of measurement	Payment rate
Power range, kW			
1	2	3	4
JSC Lenenergo St. Petersburg Territorial zone # 1			
Rates TTC per unit of maximum power			
Standardized tariff rate on technological connection of power accepting devices of consumers, not including construction of power network objects, counting per 1 kW of maximum capacity, including:	0.4	RUB/kW	853.00
Preparation and issue by the network organization of specifications to the applicant		RUB/kW	507.00
Development by the network organization of design documentation on "the last mile" construction		RUB/kW	x
Network organization control of implementation of specification by the applicant		RUB/kW	163.00
Participation of an official from the Rostekhnadzor in the survey of the applicant's connected devices		RUB/kW	65.00
Actual actions for connection and ensuring work of devices in electric networks		RUB/kW	118.00
Implementation by the network organization of activities related to "the last mile" construction		RUB/kW	x
construction of overhead lines		RUB/kW	x
construction of cable lines (attachment point is installed on the main switchboard)		RUB/kW	x
below 50 kW (inclusively)		RUB/kW	9,458.00

Connection category	Voltage level in the connection point, kV	Unit of measurement	Payment rate
Power range, kW			
1	2	3	4
over 50 kW and up to 150 kW (inclusively)	6—20	RUB/kW	15,816.00
over 150 kW and up to 670 kW		RUB/kW	15,807.00
670 kW and above		RUB/kW	14,888.00
construction of cable lines (attachment point is installed on TC/ DTS)		RUB/kW	x
over 50 kW and up to 150 kW (inclusively)		RUB/kW	12,807.00
over 150 kW and up to 670 kW		RUB/kW	12,807.00
670 kW and above		RUB/kW	11,956.00
construction of sectionalizing points		RUB/kW	X
construction of DP - distribution points		RUB/kW	X
construction of complete transformer substations (CTS), distributive transformer substations (DTS) of voltage level up to 35 kV		RUB/kW	X
below 50 kW (inclusively)		RUB/kW	X
over 50 kW and up to 150 kW (inclusively)		RUB/kW	3,847.00
over 150 kW and up to 670 kW		RUB/kW	3,693.00
670 kW and above		RUB/kW	4 649,00
C1 Standardized tariff rate on technological connection of power accepting devices of consumers, not including construction of power network objects, counting per 1 kW of maximum capacity, including:		RUB/kW	853.00
Preparation and issue by the network organization of specifications to the applicant		RUB/kW	507.00

Connection category	Voltage level in the connection point, kV	Unit of measurement	Payment rate
Power range, kW			
1	2	3	4
Development by the network organization of design documentation on "the last mile" construction	0.4	RUB/kW	X
Network organization control of implementation of specification by the applicant		RUB/kW	163.00
Participation of an official from the Rostekhnadzor in the survey of the applicant's connected devices		RUB/kW	65.00
Actual actions for connection and ensuring work of devices in electric networks		RUB/kW	118.00
Implementation by the network organization of activities related to "the last mile" construction		RUB/kW	X
construction of overhead lines		RUB/kW	X
construction of cable lines		RUB/kW	X
below 50 kW (inclusively)		RUB/kW	X
over 50 kW and up to 150 kW (inclusively)		RUB/kW	13,961.00
over 150 kW and up to 670 kW		RUB/kW	13,961.00
670 kW and above		RUB/kW	13,038.00
construction of sectionalizing points		RUB/kW	x
construction of DP - distribution points		RUB/kW	x
construction of complete transformer substations (CTS), distributive transformer substations (DTS) of voltage level up to 35 kV		RUB/kW	x
STANDARDIZED TARIFF RATE ON TECHNOLOGICAL CONNECTION			
C1 Standardized tariff rate on technological connection of power accepting devices of consumers, not including construction of power network objects, counting per 1 kW of maximum capacity, including:	0.4	RUB/kW	853.00
Preparation and issue by the network organization of specifications to the applicant		RUB/kW	507.00
Network organization control of implementation of specification by the applicant		RUB/kW	163.00

Connection category	Voltage level in the connection point, kV	Unit of measurement	Payment rate
Power range, kW			
1	2	3	4
Participation of an official from the Rostekhnadzor in the survey of the applicant's connected devices	0.4	RUB/kW	65.00
Actual actions for connection and ensuring work of devices in electric networks		RUB/kW	118.00
C2i Standardized tariff rate to cover losses on construction of overhead transmission lines counting per 1 km of line		RUB/km	x
including:			x
SIW 2 3 x70+ 1x70			144,921.00
SIW 2 3 x 95+ 1 x 95			176,846.00
SIW 3 x 120+ 1x95			196,152.00
C3i Standardized tariff rate to cover losses on construction of cable transmission lines counting per 1 km of line		RUB/km	x
Including:			x
APvBbShp 4X120 (one cable in the trench)			726,469.00
APvBbShp 4X120 (two cables in the trench)			1,017 057.00
APvBbShp 4X150 (one cable in the trench)			748,704.00
APvBbShp 4X150 (two cables in the trench)			1,048 187.00
APvBbShp 4X240 (one cable in the trench)			1,292 641.00
APvBbShp 4X240 (two cables in the trench)			1,809 698.00
ASB2I 4X120 (one cable in the trench)		626,266.00	
ASB2I 4X120 (two cables in the trench)		876,773.00	
ASB2I 4X150 (one cable in the trench)		1,127 335.00	
ASB2I 4X150 (two cables in the trench)		1,578 269.00	
ASB2I 4X240 (one cable in the trench)		826,831.00	
ASB2I 4X240 (two cables in the trench)		1,157,563.00	
C4 Standardized tariff rate to cover losses on construction transformer substations	RUB/kW	x	

Connection category	Voltage level in the connection point, kV	Unit of measurement	Payment rate
Power range, kW			
1	2	3	4
Including:			x
KTP 1X63 stub types			2,812.00
KTP 1X100 stub types			1,470.00
KTP 1X160 stub types			1,174.00
KTP 1X250 stub types			809.00
KTP 1X400 stub types			1,124.00
KTP 1X630 stub types			655.00
KTP 1X1000 stub types			487.00
KTP 1X63 pass types			5,018.00
KTP 1X100 pass types			3,233.00
KTP 1X160 pass types			2,110.00
KTP 1X250 pass types			1,464.00
KTP 1X400 pass types			1,551.00
KTP 1X630 pass types			1,083.00
KTP 1X1000 pass types			830.00
2KTP 2X63			3,671.00
2KTP 2X100			2,367.00
2KTP 2X160			1,548.00
2KTP 2X250			1,107.00
2KTP 2X400			589.00
2KTP 2X630			750.00
2KTP 2X1000			586.00
BKTR 1X100			3,267.00
BKTR 1X160			5,086.00
BKTR 1X250			2,205.00
BKTP 1X400			3,111.00
BKTP 1X630			2,045.00
BKTP 1X1000			1,314.00
BKTP 2X100			3,792.00
BKTP 2X160			2,439.00
BKTP 2X250			1,649.00
BKTP 2X400			1,495.00
BKTP 2X630			982.00
BKTP 2X1000			742.00
BKTP 2X1250			753.00
BKTP 2X1600			602.00
BKRTP 2X1250			2,241.00
RTP 4X1250			1,288.00
C1 Standardized tariff rate on technological connection of power accepting devices of consumers, not including construction of power network objects, counting per 1 kW of maximum capacity	6—20	RUB/kW	853.00

Connection category	Voltage level in the connection point, kV	Unit of measurement	Payment rate
Power range, kW			
1	2	3	4
Including:			
Preparation and issue by the network organization of specifications to the applicant			507.00
Network organization control of implementation of specification by the applicant			163.00
Participation of an official from the Rostekhnadzor in the survey of the applicant's connected devices			65.00
Actual actions for connection and ensuring work of devices in electric networks			118.00
C2i Standardized tariff rate to cover losses on construction of overhead transmission lines counting per 1 km of line		RUB/km	x
Including:			x
SIW 3 1x35			270,029.00
SIW 3 1x50			274,589.00
SIW 3 1x70			285,598.00
SIW 3 1x95			299,355.00
SIW 3 1x120			310,298.00
C3i Standardized tariff rate to cover losses on construction of cable transmission lines counting per 1 km of line			x
Including:			x
ASB2i 3X120 (one cable in the trench)			524,380.00
ASB2i 3X120 (two cables in the trench)			839,008.00
ASB2i 3X240 (one cable in the trench)			813,815.00
ASB2i 3X240 (two cables in the trench)			1,302,104
APvPu2g 3(1X120/70) (one cable in the trench)			1,370,421.00
APvPu2g 3(1X120/70) (two cables in the trench)			2,192,674
APvPu2g 3(1X185/50) (one cable in the trench)			1,467,777.00
APvPu2g 3(1X185/50) (two cables in the trench)			2,348,443
APvPu2g 3(1X240/70) (one cable in the trench)			1,621,620.00
APvPu2g 3(1X240/70) (two cables in the trench)			2,594,592

Connection category	Voltage level in the connection point, kV	Unit of measurement	Payment rate
Power range, kW			
1	2	3	4
APvBbShp 4X120 (one cable in the trench)			726,470.00
C4 Standardized tariff rate to cover losses on construction transformer substations		RUB/kW	x
Including:			x
KTP 1X63 stub types			2,812.00
KTP 1X100 stub types			1,470.00
KTP 1X160 stub types			1,174.00
KTP 1X250 stub types			809.00
KTP 1X400 stub types			1,124.00
KTP 1X630 stub types			655.00
KTP 1X1000 stub types			487.00
KTP 1X63 pass types			5,018.00
KTP 1X100 pass types			3,233.00
KTP 1X160 pass types			2,110.00
KTP 1X250 pass types			1,464.00
KTP 1X400 pass types			1,551.00
KTP 1X630 pass types			1,083.00
KTP 1X1000 pass types			830.00
2KTP 2X63			3,671.00
2KTP 2X100			2,367.00
2KTP 2X160			1,548.00
2KTP 2X250			1,107.00
2KTP 2X400			589.00
2KTP 2X630			750.00
2KTP 2X1000			586.00
BKTP 1X100			3,267.00
BKTP 1X160			5,086.00
BKTP 1X250			2,205.00
BKTP 1X400			3,111.00
BKTP 1X630			2,045.00
BKTP 1X1000			1,314.00
BKTP 2X100			3,792.00
BKTP 2X160			2,439.00
BKTP 2X250			1,649.00
BKTP 2X400			1,495.00
BKTP 2X630			982.00
BKTP 2X1000			742.00
BKTP 2X1250			753.00
BKTP 2X1600			602.00
BKRTP 2X1250			2,241.00
RTP 4X1250			1,288.00

Connection category	Voltage level in the connection point, kV	Unit of measurement	Payment rate
Power range, kW			
1	2	3	4
JSC LENENERGO, ST. PETERSBURG, A TERRITORIAL ZONE # 2			
C1 Standardized tariff rate on technological connection of power accepting devices of consumers, not including construction of power network objects, counting per 1 kW of maximum capacity	0.4	RUB/kW	853.00
Preparation and issue by the network organization of specifications to the applicant		RUB/kW	507.00
Development by the network organization of design documentation on "the last mile" construction		RUB/kW	X
Network organization control of implementation of specification by the applicant		RUB/kW	163.00
Participation of an official from the Rostekhnadzor in the survey of the applicant's connected devices		RUB/kW	65.00
Actual actions for connection and ensuring work of devices in electric networks		RUB/kW	118.00
Implementation by the network organization of activities related to "the last mile" construction		RUB/kW	x
construction of overhead lines		RUB/kW	x
construction of cable lines (attachment point is installed on the main switchboard)		RUB/kW	x
below 50 kW inclusively		RUB/kW	8,635.00
over 50 kW and up to 150 kW inclusively		RUB/kW	14,518.00
over 150 kW and up to 670 kW		RUB/kW	14,509.00
670 kW and above		RUB/kW	13,661.00
construction of cable lines (attachment point is installed on TC/ DTS)		RUB/kW	x
over 50 kW and up to 150 kW inclusively		RUB/kW	12,807.00
over 150 kW and up to 670 kW		RUB/kW	12,807.00
670 kW and above		RUB/kW	11,956.00
construction of sectionalizing points		RUB/kW	x

Connection category	Voltage level in the connection point, kV	Unit of measurement	Payment rate
Power range, kW			
1	2	3	4
construction of DP - distribution points		RUB/kW	x
construction of complete transformer substations (CTS), distributive transformer substations (DTS) of voltage level up to 35 kV		RUB/kW	x
below 50 kW inclusively		RUB/kW	x
over 50 kW and up to 150 kW inclusively		RUB/kW	3,550.00
over 150 kW and up to 670 kW		RUB/kW	3,403.00
670 kW and above		RUB/kW	4,285.00
C1 Standardized tariff rate on technological connection of power accepting devices of consumers, not including construction of power network objects, counting per 1 kW of maximum capacity	6-20	RUB/kW	853.00
Preparation and issue by the network organization of specifications to the applicant		RUB/kW	507.00
Development by the network organization of design documentation on "the last mile" construction		RUB/kW	x
Network organization control of implementation of specification by the applicant		RUB/kW	163.00
Participation of an official from the Rostekhnadzor in the survey of the applicant's connected devices		RUB/kW	65.00
Actual actions for connection and ensuring work of devices in electric networks		RUB/kW	118.00
Implementation by the network organization of activities related to "the last mile" construction		RUB/kW	x
construction of overhead lines		RUB/kW	x
construction of cable lines		RUB/kW	x
below 50 kW inclusively		RUB/kW	x
over 50 kW and up to 150 kW inclusively		RUB/kW	12,807.00
over 150 kW and up to 670 kW		RUB/kW	12,807.00
670 kW and above		RUB/kW	11,956.00
construction of sectionalizing points	RUB/kW	x	

Connection category	Voltage level in the connection point, kV	Unit of measurement	Payment rate	
Power range, kW				
1	2	3	4	
construction of DP - distribution points		RUB/kW	x	
construction of complete transformer substations (CTS), distributive transformer substations (DTS) of voltage level up to 35 kV		RUB/kW	x	
STANDARDIZED TARIFF RATE ON TECHNOLOGICAL CONNECTION				
C1 Standardized tariff rate on technological connection of power accepting devices of consumers, not including construction of power network objects, counting per 1 kW of maximum capacity	0.4	RUB/kW	853.00	
Including:				
Preparation and issue by the network organization of specifications to the applicant		RUB/kW	507.00	
Network organization control of implementation of specification by the applicant		RUB/kW	163.00	
Participation of an official from the Rostekhnadzor in the survey of the applicant's connected devices		RUB/kW	65.00	
Actual actions for connection and ensuring work of devices in electric networks		RUB/kW	118.00	
C2i Standardized tariff rate to cover losses on construction of overhead transmission lines counting per 1 km of line		RUB/km		x
Including:				x
SIW 2 3x70+1x70				133,327.00
SIW 2 3x95+1 x 95				162,698.00
SIW 2 3x120+1x95			180,460.00	
C3i Standardized tariff rate to cover losses on construction of cable transmission lines counting per 1 km of line		RUB/km		x
Including:				x
APvBbShp 4X120 (one cable in the trench)			668,326	
APvBbShp 4X120 (two cables in the trench)			935,656	
APvBbShp 4X150 (one cable in the trench)			688,781	
APvBbShp 4X150 (two cables in the trench)			964,293	
APvBbShp 4X240 (one cable in the trench)		1,189,224		

Connection category	Voltage level in the connection point, kV	Unit of measurement	Payment rate	Connection category	Voltage level in the connection point, kV	Unit of measurement	Payment rate		
Power range, kW				Power range, kW					
1	2	3	4	1	2	3	4		
APvBbShp 4X240 (two cables in the trench)			1,664,914	BKTP 1X1000			1,209.00		
ASB2I 4X120 (one cable in the trench)			576,143.00	BKTP 2X100			3,489.00		
ASB2I 4X120 (two cables in the trench)			806,600.00	BKTP 2X160			2,244.00		
ASB2I 4X150 (one cable in the trench)			1,037,149.00	BKTP 2X250			1,517.00		
ASB2I 4X150 (two cables in the trench)			1 452,009.00	BKTP 2X400			1,375.00		
ASB2I 4X240 (one cable in the trench)			760,654.00	BKTP 2X630			903.00		
ASB2I 4X240 (two cables in the trench)			1,064,915.00	BKTP 2X1000			683.00		
C4 Standardized tariff rate to cover losses on construction transformer substations			RUB/kW	x				BKTP 2X1250	693.00
Including:								x	BKTP 2X1600
KTP 1X63 stub types							2,812.00	BKRTP 2X1250	2,062.00
KTP 1X100 stub types							1,352.00	RTP 4X1250	1,185.00
KTP 1X160 stub types							1,080.00	C1 Standardized tariff rate on technological connection of power accepting devices of consumers, not including construction of power network objects, counting per 1 kW of maximum capacity	6-20 RUB/kW 853.00
KTP 1X250 stub types							744.00	Including:	
KTP 1X400 stub types							1,034.00	Preparation and issue by the network organization of specifications to the applicant	507.00
KTP 1X630 stub types							603.00	Network organization control of implementation of specification by the applicant	163.00
KTP 1X1000 stub types							448.00	Participation of an official from the Rostekhnadzor in the survey of the applicant's connected devices	65.00
KTP 1X63 pass types							4,617.00	Actual actions for connection and ensuring work of devices in electric networks	118.00
KTP 1X100 pass types							2,974.00	C2i Standardized tariff rate to cover losses on construction of overhead transmission lines counting per 1 km of line	RUB/km x
KTP 1X160 pass types							1,941.00	Including:	x
KTP 1X250 pass types				1,347.00	SIW 3 1x35	248,427.00			
KTP 1X400 pass types			1,427.00	SIW 3 1x50	252,622.00				
KTP 1X630 pass types			996.00	SIW 3 1x70	262,750.00				
KTP 1X1000 pass types			764.00	SIW 3 1x 95	275,407.00				
2KTP 2X63			3,377.00	SIW 3 1x120	285,474.00				
2KTP 2X100			2,178.00	C3i Standardized tariff rate to cover losses on construction of cable transmission lines counting per 1 km of line	x				
2KTP 2X160			1,424.00	Including:	x				
2KTP 2X250			1,018.00						
2KTP 2X400			542.00						
2KTP 2X630			690.00						
2KTP 2X1000			539.00						
BKTP 1X100			3,006.00						
BKTP 1X160			4,679.00						
BKTP 1X250			2,029.00						
BKTP 1X400			2,862.00						
BKTP 1X630			1,881.00						

Connection category	Voltage level in the connection point, kV	Unit of measurement	Payment rate		
Power range, kW					
1	2	3	4		
ASB2I 3X120 (one cable in the trench)			482,410.00		
ASB2I 3X120 (two cables in the trench)			771,856.00		
ASB2I 3X240 (one cable in the trench)			748,680.00		
ASB2I 3X240 (two cables in the trench)			1,197,888.00		
APvPu2g 3(1X120/70) (one cable in the trench)			1,260,737.00		
APvPu2g 3(1X120/70) (two cables in the trench)			2,017,179.00		
APvPu2g 3(1X185/50) (one cable in the trench)			1,350,301.00		
APvPu2g 3(1X185/50) (two cables in the trench)			2,160,482.00		
APvPu2g 3(1X240/70) (one cable in the trench)			1,494,890.00		
APvPu2g 3(1X240/70) (two cables in the trench)			2,387,024.00		
C4 Standardized tariff rate to cover losses on construction transformer substations			RUB/kW	x	
Including:					x
KTP 1X63 stub types					2,812.00
KTP 1X100 stub types					1,352.00
KTP 1X160 stub types					1,080.00
KTP 1X250 stub types					744.00
KTP 1X400 stub types					1,034.00
KTP 1X630 stub types					603.00
KTP 1X1000 stub types					448.00
KTP 1X63 pass types					4,617.00
KTP 1X100 pass types			2,974.00		
KTP 1X160 pass types			1,941.00		
KTP 1X250 pass types			1,347.00		
KTP 1X400 pass types			1,427.00		
KTP 1X630 pass types			996.00		
KTP 1X1000 pass types			764.00		
2KTP 2X63			3,377.00		
2KTP 2X100			2,178.00		
2KTP 2X160			1,424.00		
2KTP 2X250			1,018.00		
2KTP 2X400			542.00		

Connection category	Voltage level in the connection point, kV	Unit of measurement	Payment rate
Power range, kW			
1	2	3	4
2KTP 2X630			690.00
2KTP 2X1000			539.00
BKTP 1X100			3,006.00
BKTP 1X160			4,679.00
BKTP 1X250			2,029.00
BKTP 1X400			2,862.00
BKTP 1X630			1,881.00
BKTP 1X1000			1,209.00
BKTP 2X100			3,489.00
BKTP 2X160			2,244.00
BKTP 2X250			1,517.00
BKTP 2X400			1,375.00
BKTP 2X630			903.00
BKTP 2X1000			683.00
BKTP 2X1250			693.00
BKTP 2X1600			554.00
BKRTP 2X1250			2,062.00
RTP 4X1250			1,185.00

LENINGRAD REGION

Connection category		Unit of measurement	Payment rate
Power range, kW	Voltage level in the connection point, kV		
1	2	3	4

RATES TTC PER UNIT OF MAXIMUM POWER

C1 Standardized tariff rate on technological connection of power accepting devices of consumers, not including construction of power network objects, counting per 1 kW of maximum capacity, including	0.4	RUB/kW	550.00	
Preparation and issue by the network organization of specifications to the applicant		RUB/kW	289.00	
Development by the network organization of design documentation on "the last mile" construction		RUB/kW	X	
Network organization control of implementation of specification by the applicant		RUB/kW	82.00	
Participation of an official from the Rostekhnadzor in the survey of the applicant's connected devices		RUB/kW	52.00	
Actual actions for connection and ensuring work of devices in electric networks		RUB/kW	127.00	
Implementation by the network organization of activities related to "the last mile" construction		RUB/kW		
construction of overhead lines		RUB/kW	11,943.00	
construction of cable lines		RUB/kW	4,932.00	
construction of sectionalizing points		RUB/kW	x	
construction of DP - distribution points		RUB/kW	x	
construction of complete transformer substations (CTS), distributive transformer substations (DTS) of voltage level up to 35 kV				
up to 150 kV (inclusively)		RUB/kW	4,125.00	

Connection category		Unit of measurement	Payment rate	
Power range, kW	Voltage level in the connection point, kV			
1	2	3	4	
construction of complete transformer substations (CTS), distributive transformer substations (DTS) of voltage level up to 35 kV above 150 kV		RUB/kW	3,987.00	
C1 Standardized tariff rate on technological connection of power accepting devices of consumers, not including construction of power network objects, counting per 1 kW of maximum capacity including:	6-20	RUB/kW	550.00	
Preparation and issue by the network organization of specifications to the applicant		RUB/kW	289.00	
Development by the network organization of design documentation on "the last mile" construction		RUB/kW	X	
Network organization control of implementation of specification by the applicant		RUB/kW	82.00	
Participation of an official from the Rostekhnadzor in the survey of the applicant's connected devices		RUB/kW	52.00	
Actual actions for connection and ensuring work of devices in electric networks		RUB/kW	127.00	
Implementation by the network organization of activities related to "the last mile" construction		RUB/kW		
construction of overhead lines		RUB/kW	11,344.00	
construction of cable lines		RUB/kW	3,551.00	
construction of sectionalizing points		RUB/kW	x	
construction of DP - distribution points		RUB/kW	x	
construction of complete transformer substations (CTS), distributive transformer substations (DTS) of voltage level up to 35 kV				
Standardized tariff rate on technological connection				

Connection category		Unit of measurement	Payment rate		
Power range, kW	Voltage level in the connection point, kV				
1	2	3	4		
C1 Standardized tariff rate on technological connection of power accepting devices of consumers, not including construction of power network objects, counting per 1 kW of maximum capacity	0.4	RUB/kW	550.00		
Including:					
C1 below 150 kW inclusively			RUB/kW	550.00	
C1 over 150 kW and up to 670 kW			RUB/kW	550.00	
C1 670 kW and above			RUB/kW	550.00	
C2i Standardized tariff rate to cover losses on construction of overhead transmission lines counting per 1 km of line			RUB/km		
Including:					
SIW-2A 3x95+1x95+1x16					382,663.00
SIW-2A 3x35+1x50					241,015.00
SIW-2A 3x50+1x70					241,646.00
SIW-2A 3x70+1x70					244,843.00
SIW-2A 3x70+1x95					246,255.00
C3i Standardized tariff rate to cover losses on construction of cable transmission lines counting per 1 km of line				RUB/km	
Including:					
AAB2I -1 (3x185) two cables		738,909.00			
ASB 4x185		377,953.00			
ASB 4x185 two cables		692,635.00			
AAB-2I-1(3x185) four cables		1,259,709.00			
C4 Standardized tariff rate to cover losses on construction transformer substations	RUB/kW				
Including:					
MTP 1x100 kVA			711		
MTP 1x160 kVA			474		
MTP 1x250 kVA			332		
STP 1x25 kVA			1,830.00		
STP 1x40 kVA			1,483.00		
STP 1x63 kVA			1,442.00		
STP 1x100 kVA			1,407.00		
STP 1x160 kVA			989		

Connection category		Unit of measurement	Payment rate	
Power range, kW	Voltage level in the connection point, kV			
1	2	3	4	
KTP 1x63 kVA stub types	6-20	RUB/kW	1,964.00	
KTP 1x100 kVA stub types			1,271.00	
KTP 1x160 kVA stub types			1,206.00	
KTP 1x250 kVA stub types			653	
KTP 1x400 kVA stub types			421	
KTP 1x630 kVA stub types			299	
KTP 1x1000 kVA stub types			385	
KTP 2x63 kVA stub types			1,393.00	
KTP 2x100 kVA stub types			907	
KTP 2x160 kVA stub types			595	
KTP 2x250 kVA stub types			452	
KTP 2x400 kVA stub types			333	
KTP 2x630 kVA stub types			226	
KTP 2x1000 kVA stub types			327	
BKTP 1x250 kVA			2,779.00	
BKTP 1x400 kVA			1,742.00	
BKTP 1x630 kVA			1,240.00	
BKTP 1x1000 kVA			741	
BKTP 1x1250 kVA			616	
BKTP 2x250 kVA			2,263.00	
BKTP 2x400 kVA			1,444.00	
BKTP 2x630 kVA			990	
BKTP 2x1000 kVA			854	
BKTP 2x1250 kVA			760	
BKTP 2x1600 kVA	602			
C1 Standardized tariff rate on technological connection of power accepting devices of consumers, not including construction of power network objects, counting per 1 kW of maximum capacity	6-20	RUB/kW	550.00	
Including:				
C1 below 150 kW inclusively			RUB/kW	550.00
C1 over 150 kW and up to 670 kW			RUB/kW	550.00
C1 670 kW and above				
C2i Standardized tariff rate to cover losses on construction of overhead transmission lines counting per 1 km of line			RUB/km	

Connection category		Unit of measurement	Payment rate	
Power range, kW	Voltage level in the connection point, kV			
1	2	3	4	
Including:		RUB/km		
SIW-3 1x95 (joint suspension)			458,165.00	
SIW-3 1x50			333,734.00	
SIW-3 1x70			360,561.00	
SIW-3 1x95			387,635.00	
SIW-3 1x120			408,978.00	
C3i Standardized tariff rate to cover losses on construction of cable transmission lines counting per 1 km of line				
Including:		RUB/km		
APvPG- 10 3x(1x240/50)			524,783.00	
ASB- 10 (3x240)			419,044.00	
APvPG- 10 3(1x240/50) two cables			1,040,984.00	
ASB- 10 (3x240) two cables			787,931.00	
3x225 mm ² by the method of horizontal directional drilling			3,167,244.00	
4x225 mm ² by the method of horizontal directional drilling			4,221,514.00	
C4 Standardized tariff rate to cover losses on construction transformer substations				
Including:			RUB/kW	
MTP 1x100 kVA				711
MTP 1x160 kVA				474
MTP 1x250 kVA				332
STP 1x25 kVA				1,830.00
STP 1x40 kVA				1,483.00
STP 1x63 kVA				1,442.00
STP 1x100 kVA				1,407.00
STP 1x160 kVA		989		
KTP 1x63 kVA stub types		1,964.00		
KTP 1x100 kVA stub types		1,271.00		
KTP 1x160 kVA stub types		1,206.00		
KTP 1x250 kVA stub types		653		
KTP 1x400 kVA stub types		421		
KTP 1x630 kVA stub types		299		
KTP 1x1000 kVA stub types		385		
KTP 2x63 kVA stub types		1,393.00		

Connection category		Unit of measurement	Payment rate
Power range, kW	Voltage level in the connection point, kV		
1	2	3	4
KTP 2x100 kVA stub types			907
KTP 2x160 kVA stub types			595
KTP 2x250 kVA stub types			452
KTP 2x400 kVA stub types			333
KTP 2x630 kVA stub types			226
KTP 2x1000 kVA stub types			327
BKTP 1x250 kVA			2,779
BKTP 1x400 kVA			1,742.00
BKTP 1x630 kVA			1,240.00
BKTP 1x1000 kVA			741
BKTP 1x1250 kVA			616
BKTP 2x250 kVA			2,263.00
BKTP 2x400 kVA			1,444.00
BKTP 2x630 kVA			990
BKTP 2x1000 kVA			854
BKTP 2x1250 kVA			760
BKTP 2x1600 kVA			602

Appendix | 12

Data on approved technological connection tariffs for 2014-2015

1	2	3	4	5	6	7	8
	Name	Physical quantities: on OTL, cable networks - length of circuit (km); on substations, other assets - amount (pcs)	Book (residual) value as of 01.01.2014, RUB thousand	Received from 01.01.2014 to 31.12.2014 RUB thousand	Disposals from 01.01.2014 to 31.12.2014 RUB thousand	Accrued depreciation from 01.01.2014 to 31.12.2014 RUB thousand	Book (residual) value as of 31.12.2014 RUB thousand
1.	Assets related to electricity facilities, including:		109,190,457	23,424,134	100,917	9,026,779	123,486,895
1.1.	OTL 220 kV and above						
1.2.	OTL 110 kV	7,260.3	8,597,700	1,551,863		814,156	9,335,408
1.3.	OTL 35 kV	3,674.9	7,054,079	953,238	7,448	899,711	7,100,158
1.4.	OTL 10 kV and below	30,896.4	2,979,113	1,121,026	3	464,692	3,635,444
1.5.	SS 220 kV and above						
1.6.	SS 110 kV	210	12,718,626	3,216,803	27,772	1,460,918	14,446,740
1.7.	SS 35 kV	169	16,703,627	5,813,775	8,636	1,425,864	21,082,902
1.8.	SS 10 kV and below	16,233	70,597	2,469		8,338	64,728
1.9.	Cable networks (all voltage classes)	21,566.7	49,084,854	7,953,825	37,415	2,462,595	54,538,669
1.10.	Other assets held for maintenance of electrical connections		11,981,861	2,811,135	19,643	1,490,506	13,282,847
2.	Non-core assets brought in the register of non-core assets	18	372		227		144
3.	Other assets (item 3 = item 4 – item 2 – item 1), including		3,234,493	917,754	0	7,539	4,144,709
3.1.	Land plots in property	49	79,465	27,951			107,416
4.	Fixed assets (line of the balance sheet)		112,425,322	24,341,888	101,144	9,034,318	127,631,748
5.	Rented assets (and also served under contracts of maintenance) related to power grid facilities, including:		680,535	63,631	24,593	depreciation is not charged for fixed assets accounted on off-balance account	719,573
5.1.	OTL 220 kV and above						
5.2.	OTL 110 kV	164.37	23,999		23,999		0
5.3.	OTL 35 kV	53.76	1,968				1,968
5.4.	OTL 10 kV and below	254.63	24,011				24,011
5.5.	SS 220 kV and above						
5.6.	SS 110 kV	14	1,697				1,697
5.7.	SS 35 kV	8	77,802				77,802
5.8.	SS 10 kV and below	1210	386,923	63,631	594		449,960
5.9.	Cable networks (all voltage classes)	1465.7	159,894				159,894

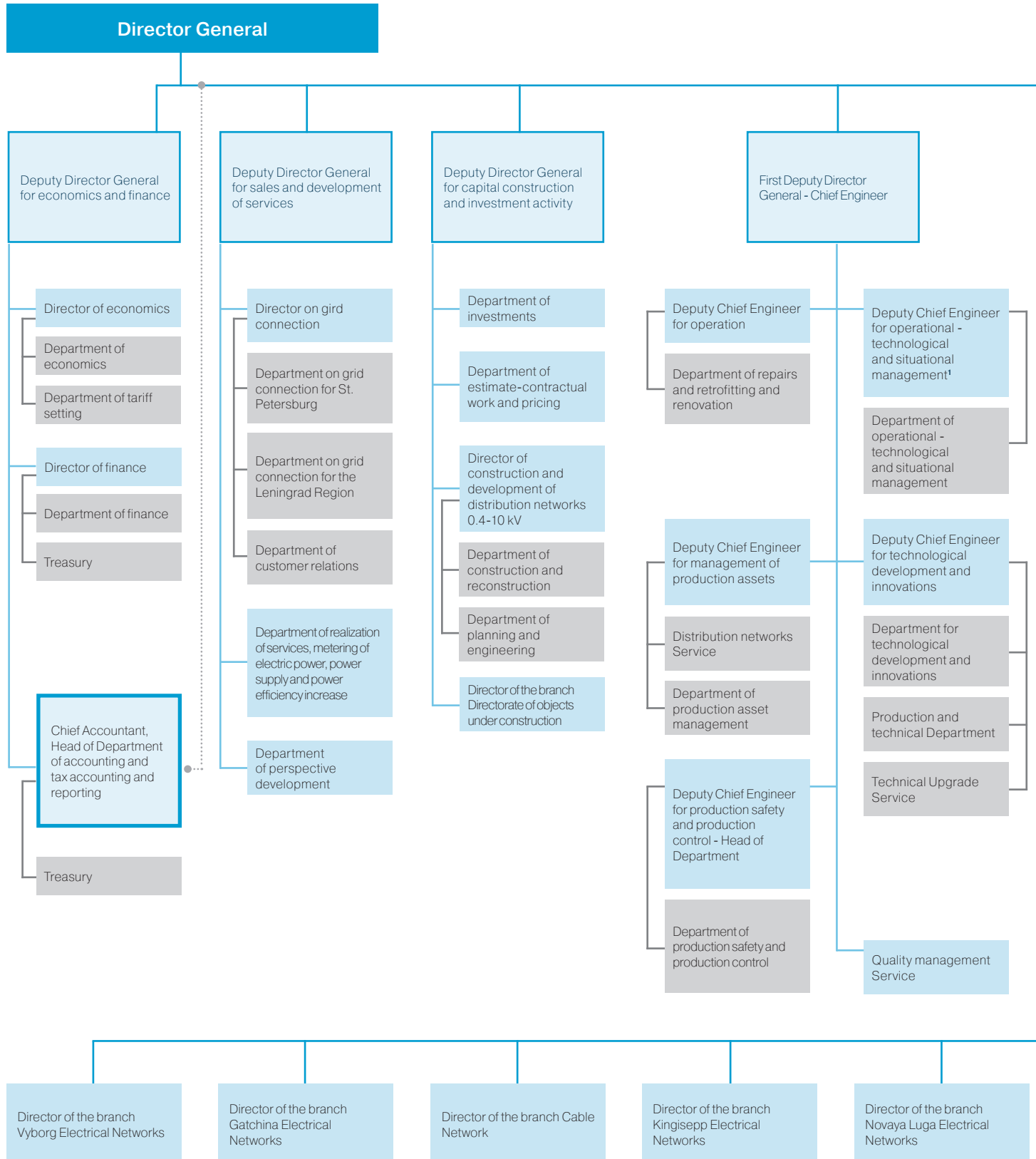
1	2	3	4	5	6	7	8
	Name	Physical quantities: on OTL, cable networks - length of circuit (km); on substations, other assets - amount (pcs)	Book (residual) value as of 01.01.2014, RUB thousand	Received from 01.01.2014 to 31.12.2014 RUB thousand	Disposals from 01.01.2014 to 31.12.2014 RUB thousand	Accrued depreciation from 01.01.2014 to 31.12.2014 RUB thousand	Book (residual) value as of 31.12.2014 RUB thousand
1	2	3	4	5	6	7	8
5.10.	Other rented assets held for maintenance of electrical connections		4,241				4,241
6.	Other rented assets, including:		455,140	433,045	447,496	depreciation is not charged for fixed assets accounted on off-balance account	440,689
6.1.	Land plots	15,184 including: under area – 4,394 under lines – 10,790	30,887	3,575	23,049		11,413
7.	Assets used under lease contracts related to power grid facilities, including:		353,930	0	10,515	depreciation is not charged for fixed assets accounted on off-balance account	343,415
7.1.	OTL 220 kV and above						
7.2.	OTL 110 kV						
7.3.	OTL 35 kV						
7.4.	OTL 10 kV and below						
7.5.	SS 220 kV and above						
7.6.	SS 110 kV		276,128		10,515		264,613
7.8.	SS 35 kV		77,802				77,802
7.9.	SS 10 kV and below						
7.10.	Cable networks (all voltage classes)						
8.	Other assets used under lease contracts held for maintenance of electrical connections						
9.	Other assets used under lease contracts						
10.	Total rented assets, including on leasing (item 10 = item 5 + item 6 + item 7 + item 8 + item 9)		1,489,605	496,676	482,604	depreciation is not charged for fixed assets accounted on off-balance account	1,503,677
11.	TOTAL (item 11 = item 4 + item 10)		113,914,927	24,838,564	583,748	9 34,318	129,135,425

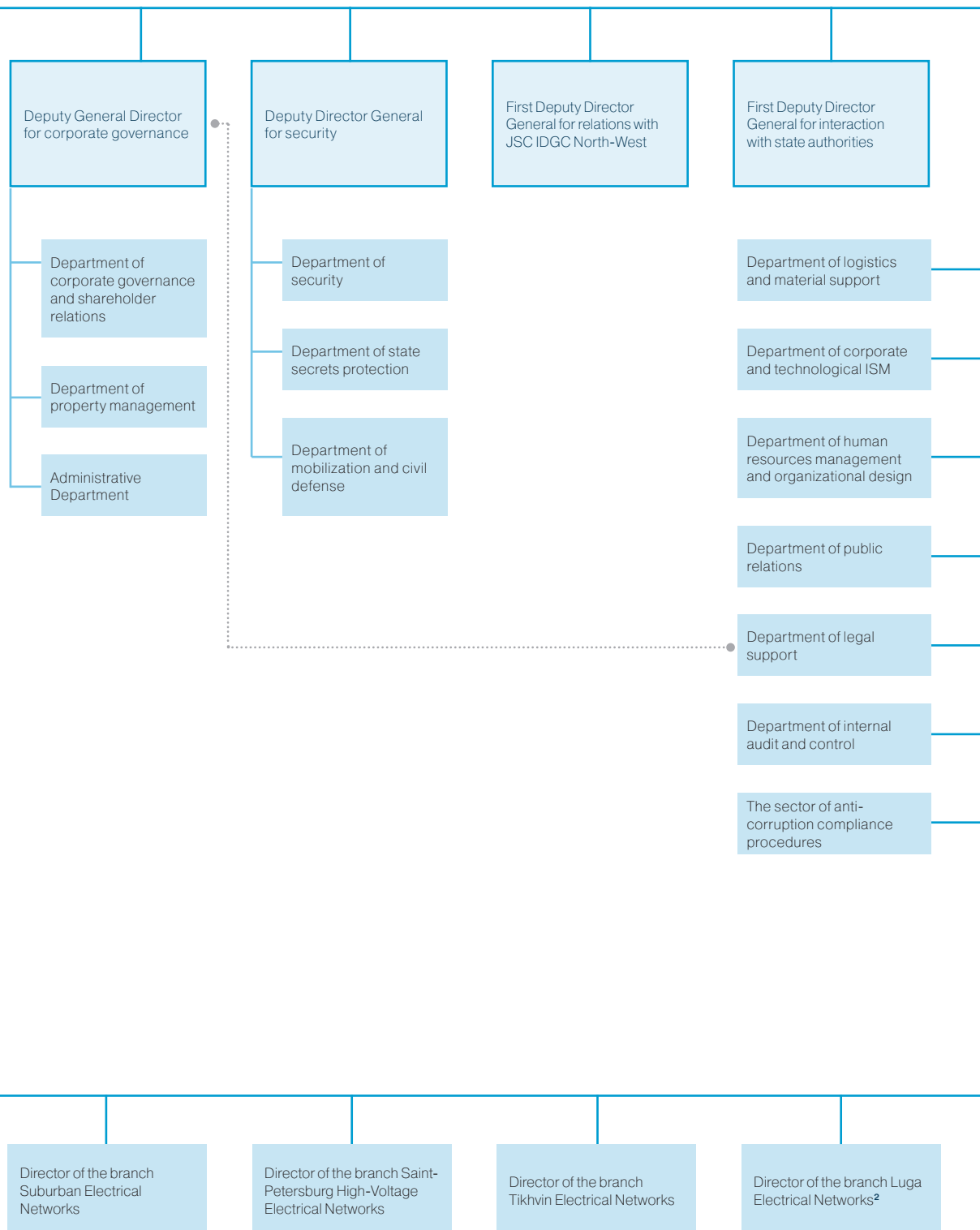
Appendix | 13 Dynamics of CAPEX in 2012–2014

Lenenergo	2012	2013	2014		
			Plan	Fact	Deployed %
Direction of investment activity — total:	14,891.4	18,728.9	25,864.1	23,410.7	91 %
Power grid facilities, including:	13,381.0	17,614.9	23,714.2	20,619.9	87 %
Retrofitting and renovation (R&R), including:	4,851.0	5,521.9	10,753.3	9,760.7	91 %
overhead lines, including:	1,057.3	1,683.06	2,145.9	2,547.6	119 %
OTL 110-220 kV (HV)	216.7	471.8	604.8	837.0	138 %
OTL 35 kV (MV1)	133.4	70.4	50.6	25.4	50 %
OTL 1-20 kV (MV2)	196.0	228.6	265.8	408.5	154 %
OTL 0.4 kV (LV)	511.3	912.2	1,224.6	1,276.7	104 %
cable lines, including:	1,131.0	1,548.7	3,663.4	3,016.0	82 %
CL 110 kV (HV)	50.4	142.1	1,277.0	441.6	35 %
CL 20-35 kV (MV1)	-	46.3	595.8	867.6	146 %
CL 3-10 kV (MV2)	1,073.6	1,359.7	1,778.9	1,701.8	96 %
CL 1 kV (LV)	7.0	0.5	11.7	5.0	42 %
substations, including:	2,078.6	1,580.7	3,967.1	3,682.6	93 %
Level of input voltage HV	1,708.5	1,158.9	2,868.6	2,732.0	95 %
Level of input voltage MV1	252.4	142.0	503.5	621.7	123 %
Level of input voltage MV2	117.7	279.9	595.0	328.9	55 %
Other power grid facilities (automation, communication)	584.0	709.3	976.8	514.5	53 %
New construction and expansion of operating facilities, including:	8,530.0	12,093.1	12,961.0	10,859.1	84 %
overhead lines, including:	852.0	2,344.4	2,531.1	1,993.4	79 %
OTL 110-220 kV (HV)	57.8	464.4	861.4	485.3	56 %
OTL 35 kV (MV1)	-	-	0.0	0.3	
OTL 1-20 kV (MV2)	1.9	12.1	4.9	3.4	68 %
OTL 0.4 kV (LV)	792.3	1,867.9	1,664.8	1,504.5	90 %
cable lines, including:	6,654.3	8,693.6	8,822.3	8,097.1	92 %
CL 110 kV (HV)	1,432.0	2,483.2	2,142.3	1,979.1	92 %
CL 20-35 kV (MV1)	-	-	0.0	0.0	
CL 3-10 kV (MV2)	5,222.3	6,210.5	6,679.9	6,118.0	92 %
CL 1 kV (LV)	-	-	0.0	0.0	
substations, including:	979.4	1,055.0	1,607.6	768.6	48 %
Level of input voltage HV	936.1	954.7	1,437.6	696.0	48 %
Level of input voltage MV1	0.7	5.8	80.0	5.9	7 %
Level of input voltage MV2	42.6	94.6	90.0	66.6	74 %
Other power grid facilities (automation, communication)	44.3	-	0.0	0.0	
Metering and controlling devices of electric power	69.6	262.9	1,037.2	288.5	28 %
R&R for construction of future periods	-	-	0,0	0.0	
Other production and business facilities	229.9	597.9	836.1	1,736.4	208 %
Equipment not included into estimates of construction	173.6	205.0	138.0	680.1	493 %
Non-industrial facilities	-	-	0.0	0.0	
Capital investments in intangible assets	7.2	9.8	49.9	78.3	157 %
Long-term financial investments	-	0	0.0	3.5	
Acquisition of fixed assets	1,016.5	16.7	0.0	4.0	
R&D	13.7	21.8	88.6	0.0	0 %

Appendix | 14

Organizational structure





¹ With the assignment of duties of the head of Department

² The branch structure is temporarily not filled

Appendix | 15

Information about instructions issued in 2014

Instructions	Prescribed actions in 2014	Performed actions in 2014	Not expired term
Issued by state supervisory authorities, including:	307	307	-
Oversight Management of the Russian Ministry for Emergency Situations	46	46	-
Federal Service for Ecological, Technological and Nuclear Supervision (Rostekhnadzor)	257	257	-
Russian Agency for Health and Consumer Rights (Rosпотребнадзор)	4	4	-

Appendix | 16

Customer service centers in St. Petersburg and the Leningrad Region

№#	Contact information (telephone number with a region code)	Branch	Working hours
1	(812) 595-86-50	Customer service center in St. Petersburg	Mon – Thu: 8:30 am – 5:20 pm; Fri: 8:30 am – 4:20 pm
2	(812) 494-35-19	Customer service center in the Leningrad Region, Executive Office	Mon, Wed: 9:00 am – 12:00 pm; Tue, Thu: 13:30 am – 4:00 pm; Fri: 8:30 am – 4:20 pm
	(812) 458-36-93	Customer service center in the Leningrad Region — Gatchina office	Mon, Wed: 9:00 am – 4:00 pm; Tue, Thu: 9:00 am – 4:00 pm; Fri: 8:30 am – 4:20 pm
	(81363) 30-107	Customer service center in the Leningrad Region — Novaya Ladoga office	Mon, Tue, Wed, Thu: 8:00 am – 5:00 pm; Fri: 8:30 am – 4:20 pm
	(812) 494-32-94	Customer service center in the Leningrad Region — Suburban office	Mon, Wed: 9:00 am – 12:00 pm; Tue, Thu: 9:30 am – 4:00 pm; Fri: 8:30 am – 4:20 pm
	(81375) 20-376	Servicing center for the Leningrad region — Kingisepp office	Mon, Tue: 9:00 am – 4:00 pm; Wed, Thu: 9:00 am – 4:00 pm; Fri: 8:30 am – 4:20 pm
	(81378) 22-087	Customer service center in the Leningrad Region — Vyborg office	Mon, Wed: 8:30 am – 3:30 pm; Tue, Thu: 8:30 am – 3:30 pm; Fri: 8:30 am – 4:20 pm
	(81367) 74-286	Customer service center in the Leningrad Region – Tikhvin office	Mon, Wed: 9:00 am – 12:00 pm; Tue, Thu: 13:30 pm – 4:00 pm; Fri: 8:30 am – 4:20 pm
	(81372) 24-880	Customer service center in the Leningrad Region – Luga office	Mon, Tue, Wed, Thu: 9:00 am – 4:00 pm; Friday: 8:30 am – 4:20 pm
3	(812) 595-86-62, (812) 494-31-71, 8-800-700-14-71	Hot line	24/7
4	8-800-700-14-71	Customer and grid connection center	Mon, Fri: 9:00 am - 8:00 pm; Sat: 9:00 am - 6:00 pm